

DUAL COLOR THC TESTING KIT

Read all SAFETY INFORMATION before use.



Compassionate
Analytics

Plant Knowledge

INSTRUCTIONS

STEP 1 – HEAT CONVERSION OF SAMPLE

Some cannabinoids exist in acid form (ie. THC-A), and must be converted to non-acid form (ie. THC). This can be done simply with low heat conversion.

A. Convert SAMPLE

- Measure and grind ~0.5 grams of SAMPLE onto a square of aluminum foil
- Fold foil, and place sample in oven at 325°F for 5 minutes
- Remove SAMPLE from oven – SAMPLE should be slightly browned

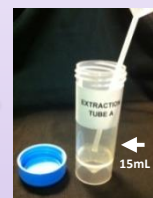
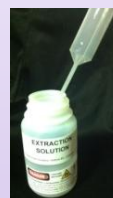


STEP 2 – EXTRACTION

This step will efficiently extract all of the cannabinoids (ie. THC) out of the SAMPLE and into the EXTRACTION SOLUTION, ready for testing in Step 3.

A. Add 15mL of EXTRACTION SOLUTION to EXTRACTION TUBE A (BLUE CAP)

- Use the Large Transfer Pipette (squeeze the bulb to fill) – add solution up to the 15mL marking on Extraction Tube A



B. Add 0.10 grams of SAMPLE from STEP 1 to EXTRACTION TUBE A

- Weigh sample using an accurate scale



C. Put lid tightly on EXTRACTION TUBE A. Let sit for 1 minute, then shake vigorously for 1 minute.

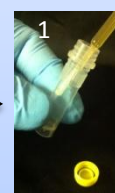
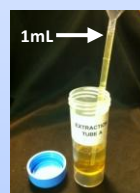


STEP 3 – DETERMINE THC CONCENTRATION

Two color assays will allow you to calculate the THC concentration of the cannabis sample. Using two assays results in greater accuracy across a broader range of THC percentages.

A. Add 1mL of EXTRACT from EXTRACTION TUBE A to ASSAY TUBES 1 (Yellow) and 2 (Red)

- Use the SMALL Transfer Pipette to exactly 1mL to each Assay Tube – the top line on the transfer pipette is 1mL
- Screw the lids back onto each Assay Tube



B. Shake Well; Wait for **5 Minutes exactly.**

C. Compare to THC% Chart to see **RESULTS**

- In well lit area, move each tube along the chart to find the right color match. This is the THC% of your sample. For greater accuracy, repeat process and average the results

